



## Vermont Head Start Association



### The Value of Head Start Early Education and Comprehensive Health and Family Services for Children, Families and School Districts



### School Readiness: Early Education for At-Risk Children and Closing the Achievement Gap

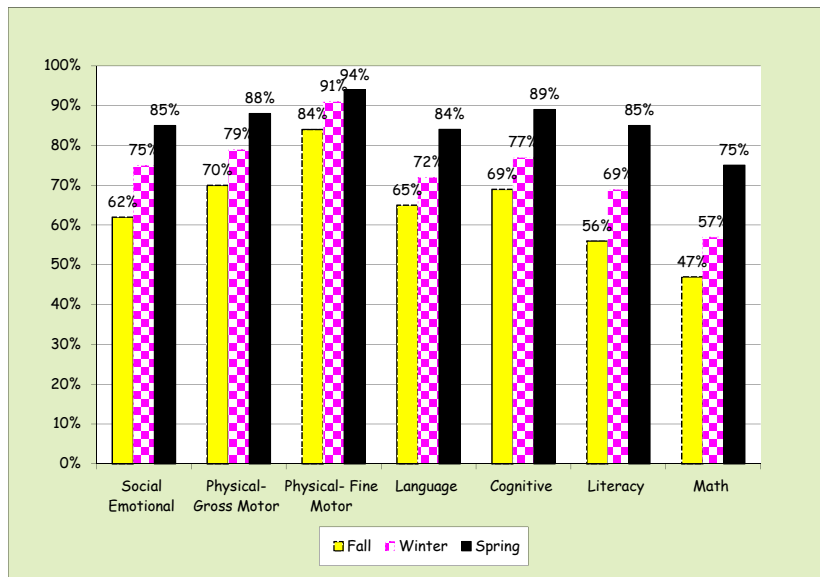
- High quality early education services
- Research-based curriculum and Teaching Strategies Gold developmental assessment aligned with the Vermont Early Learning Standards (VELS) and in accordance with the federal Head Start Early Learning Outcomes Framework
- Focus on children's social, emotional, cognitive and physical development



## School Readiness: Early Education for At-Risk Children and Closing the Achievement Gap

- Specifically designed to support school readiness and transition to kindergarten
- Expertise in serving children with special needs, and individualizing services for all children
- Supporting the family to support the child's classroom experience
- CLASS – Classroom Assessment Scoring System

**CVHS - Child Outcomes and School Readiness 2015 - 2016**  
**Head Start children meeting or exceeding widely held expectations**



## Coordination of Children's Health Services

- Health, behavioral, sensory and developmental screenings
- Medical, dental and mental health services
- Food and nutrition services
- Assuring that children have health care providers
- Assuring that children are up-to-date on exams and receive needed follow-up treatment



## Coordination of Children's Health Services

### VT Head Start Program Information Report Data 2015-2016

- 99.2% (1,167): Medical home at the end of enrollment year
- 90.4% (1,064): Up-to-date on VT EPSDT schedule for well child care at the end of enrollment year
- 90.1% (1,061): Up-to-date on a schedule of preventive and primary health care per EPSDT at the end of the year.
- 91% (1,071): Dental home at the end of enrollment year



## **Family Engagement and Social Service Support for Families**

- Individualized home visits designed to engage parents in their children's growth, learning and development
- Assisting families in accessing social services and community resources to meet their needs
- Addressing a wide range of stressors and crises with the goal of helping to assure family stability and well-being
- Supporting parents to set and realize their own goals



## **Family Engagement and Social Service Support for Families**

### **VT Head Start Program Information Report Data 2015-2016: *Homelessness***

- 15.8% (251): Families experiencing homelessness that were served during the enrollment year
- 64.9% (163): Families experiencing homelessness that acquired housing during the enrollment year

## **Family Engagement and Social Service Support for Families**

- Supporting parents in making progress toward their own goals
- Involving parents in program and community leadership
- Head Start Parent, Family and Community Engagement Framework



## **Highly Qualified Management and Service Teams**

- Content area specialists include child development specialists, mental health consultants, dental hygienists, dieticians, safety personnel and others
- Teams assure coordinated and optimal support for the physical, social and emotional development of children, as well as their academic skills
- Systems designed to prepare children for successful kindergarten transition, to reduce challenging behaviors, and to close the achievement gap for students from low-income families

## **Head Start Dedicates Federal Resources to School-Based Partnerships**

- Leveraging federal, state and local funding to optimize services and outcomes for children
- Head Start employs licensed teachers assigned to school-based programs – value per teacher (e.g., CVHS) for 2015-2016 exceeds \$63,000 per teacher



## **Benefits for Schools, Children and Communities**

- Savings attributable to Head Start in terms of reduced costs downstream in areas such as special education, behavioral interventions, and other ancillary services
- Predominantly mixed socio-economic groups of children in VT Head Start–school-based programs
- Federal monitoring assures high quality and consistency in programs, with emphasis on environmental health and safety
- Overwhelming support of parents and communities



## Benefits for Schools, Children and Communities

- Experience in using qualitative measures such as CLASS (Classroom Assessment Scoring System) to measure emotional support, classroom organization, and the instructional support teachers provide to children
- Social service and family engagement supports help build stronger communities and family engagement with the school and improve child outcomes



## Questions?

